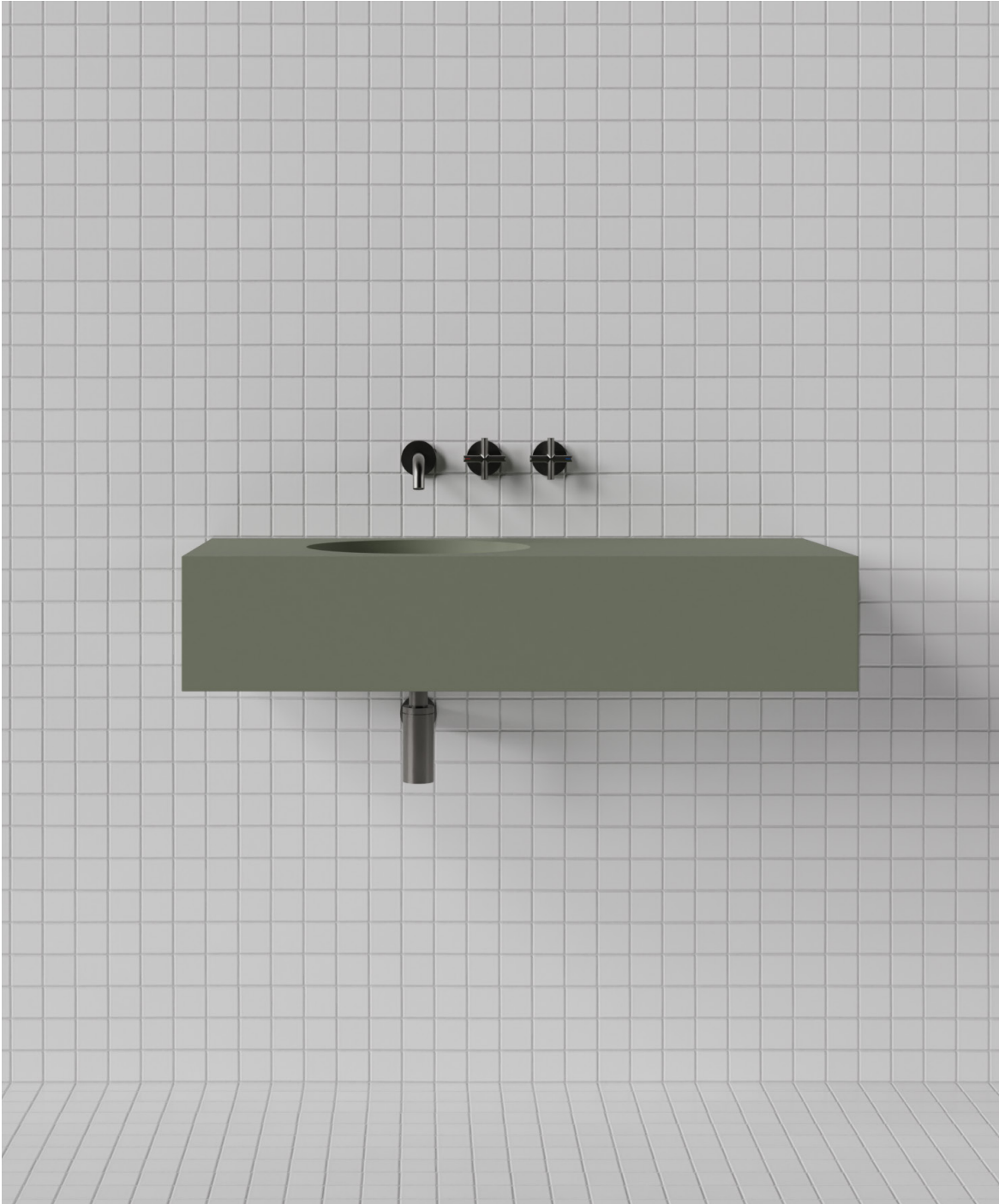


# MAINS



**Made To Measure**

**M.W.C.**

# HARPER: Wall Mounted

**Material:**  
Matt Solid Surface  
**Finish:**  
Uncoated & Resin coat

**Colour:**  
White  
Grey  
Black  
Cream  
Nude  
Red  
Sage  
Brick



## Harper Wall Basin (Single)

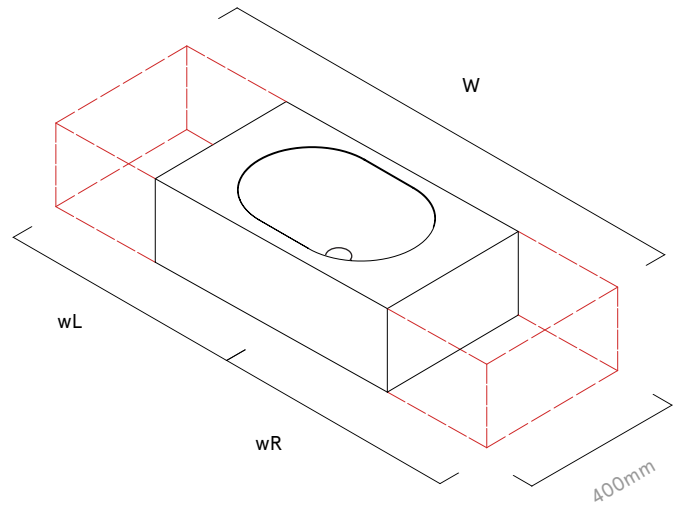
**Bowl Size:**  
470 W x 320 D

**Overall Dimensions:**  
220 H x 400 D  
W: 600 - 2600

wL: 335min  
wR: 335min

wL: \_\_\_\_\_ mm

wR: \_\_\_\_\_ mm



Name \_\_\_\_\_

Date \_\_\_\_\_

Sign \_\_\_\_\_

## Harper Wall Basin (Double)

**Bowl Size:**  
470 W x 320 D

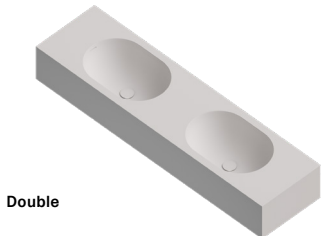
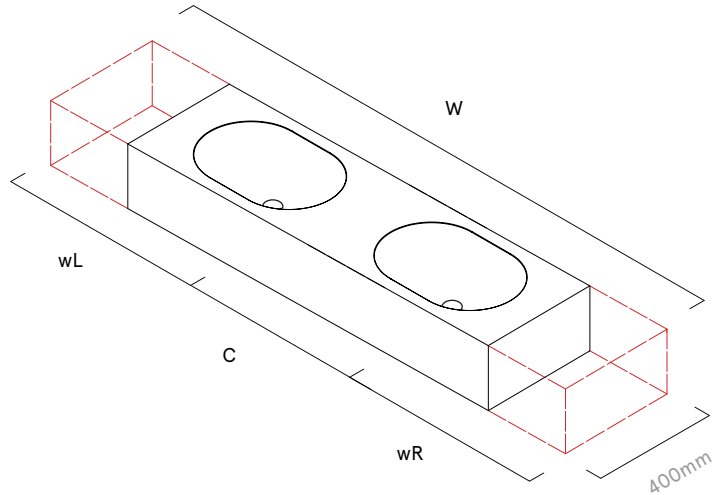
**Overall Dimensions:**  
220 H x 400 D  
W: 1100 - 2600

wL: 335min  
wR: 335min  
C: 670min

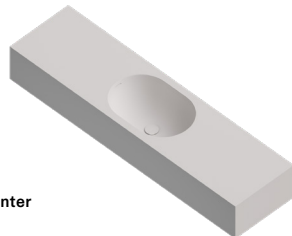
wL: \_\_\_\_\_ mm

wR: \_\_\_\_\_ mm

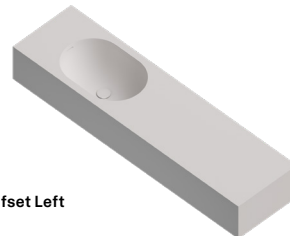
C: \_\_\_\_\_ mm



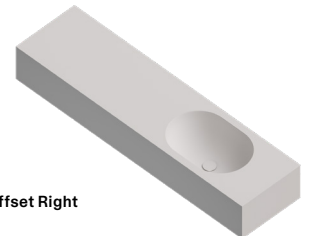
Double



Center



Offset Left



Offset Right

**Solid Surface care:**  
Clean with a soapy sponge, followed by a rinse. For stubborn stains such as lime scale or soap build up use a mild abrasive cleaner like Gumption® paste, Jif® cream or Ajax® cream or powder – use with a soft damp cloth in wide circular motions.

**Resin Coat Care**  
Clean with a neutral, non abrasive cleaner. Scouring agents abrasive cleaning agents such as scouring sponges not suitable for cleaning Resincoat. It is best to clean with warm water and then thoroughly rinsed. Smaller scratches can be polished out with a little skill, in the same way as they can be removed from car paintwork.

Mains Water Co. has detailed, to the best of its ability, the most approximate measurement possible for each product given the method of manufacturing used. Due to varying manufacturing methods, the dimensions illustrated here are nominal and subject to change without notice.

# HARPER: Benchtop

**Material:**  
Matt Solid Surface  
**Finish:**  
Uncoated & Resin coat

**Colour:**  
White  
Grey  
Black  
Cream  
Nude  
Red  
Sage  
Brick



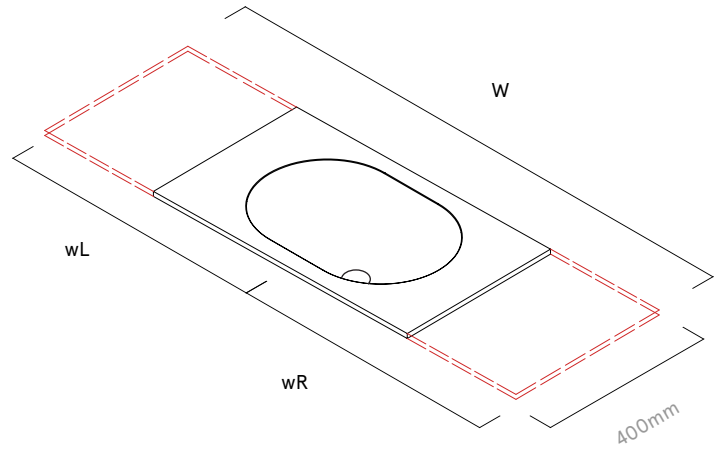
## Harper Benchtop (Single)

**Bowl Size:**  
470 W x 320 D

**Overall Dimensions:**  
165 H x 400 D  
W: 600 - 2600

wL: 335min  
wR: 335min

wL: \_\_\_\_\_ mm



wR: \_\_\_\_\_ mm

Name \_\_\_\_\_

Date \_\_\_\_\_

Sign \_\_\_\_\_

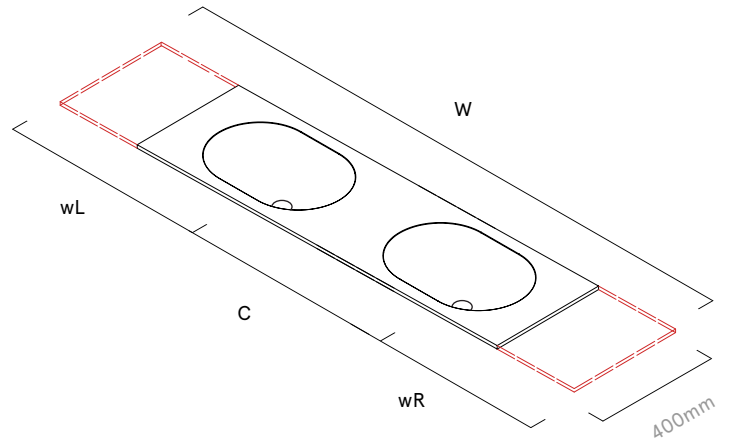
## Harper Benchtop (Double)

**Bowl Size:**  
470 W x 320 D

**Overall Dimensions:**  
165 H x 400 D  
W: 1100 - 2600

wL: 335min  
wR: 335min  
C: 670min

wL: \_\_\_\_\_ mm



wR: \_\_\_\_\_ mm

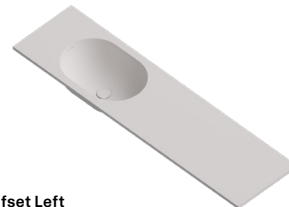
C: \_\_\_\_\_ mm



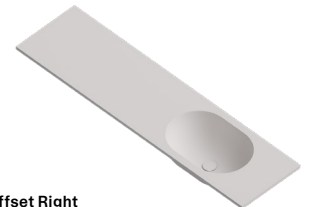
Double



Center



Offset Left



Offset Right

**Solid Surface care:**  
Clean with a soapy sponge, followed by a rinse. For stubborn stains such as lime scale or soap build up use a mild abrasive cleaner like Gumption® paste, Jif® cream or Ajax® cream or powder – use with a soft damp cloth in wide circular motions.

**Resin Coat Care**  
Clean with a neutral, non abrasive cleaner. Scouring agents abrasive cleaning agents such as scouring sponges not suitable for cleaning Resincoat. It is best to clean with warm water and then thoroughly rinsed. Smaller scratches can be polished out with a little skill, in the same way as they can be removed from car paintwork.

Mains Water Co. has detailed, to the best of its ability, the most approximate measurement possible for each product given the method of manufacturing used. Due to varying manufacturing methods, the dimensions illustrated here are nominal and subject to change without notice.

# HARPER: Long Wall Mounted

**Material:**  
Matt Solid Surface  
**Finish:**  
Uncoated & Resin coat

**Colour:**  
White  
Grey  
Black  
Cream  
Nude  
Red  
Sage  
Brick



**Harper Long Wall  
Basin (Single)**

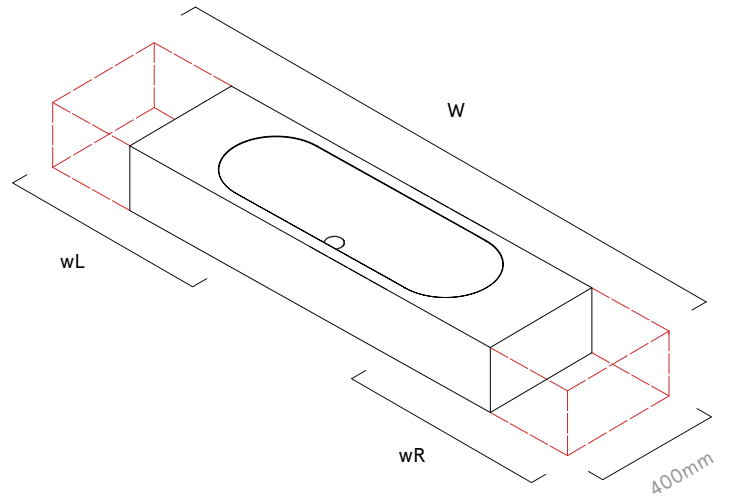
**Bowl Size:**  
1150 W x 340 D

**Overall Dimensions:**  
220 H x 400 D  
W: 1300 - 2600

wL: 675min  
wR: 675min

wL: \_\_\_\_\_ mm

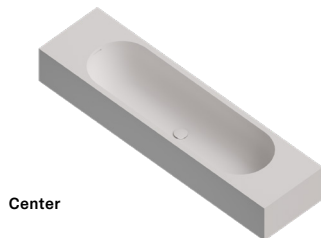
wR: \_\_\_\_\_ mm



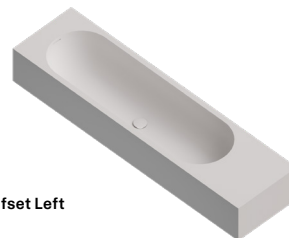
Name \_\_\_\_\_

Date \_\_\_\_\_

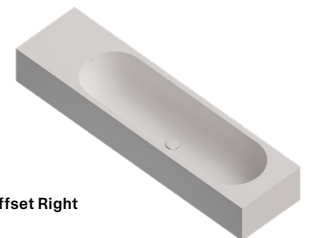
Sign \_\_\_\_\_



Center



Offset Left



Offset Right

**Solid Surface care:**  
Clean with a soapy sponge, followed by a rinse. For stubborn stains such as lime scale or soap build up use a mild abrasive cleaner like Gumption® paste, Jif® cream or Ajax® cream or powder – use with a soft damp cloth in wide circular motions.

**Resin Coat Care**  
Clean with a neutral, non abrasive cleaner. Scouring agents abrasive cleaning agents such as scouring sponges not suitable for cleaning Resincoat. It is best to clean with warm water and then thoroughly rinsed. Smaller scratches can be polished out with a little skill, in the same way as they can be removed from car paintwork.

Mains Water Co. has detailed, to the best of its ability, the most approximate measurement possible for each product given the method of manufacturing used. Due to varying manufacturing methods, the dimensions illustrated here are nominal and subject to change without notice.

# HARPER: Long Benchtop

**Material:**  
Matt Solid Surface  
**Finish:**  
Uncoated & Resin coat

**Colour:**  
White  
Grey  
Black  
Cream  
Nude  
Red  
Sage  
Brick



**Harper Long  
Benchtop (Single)**

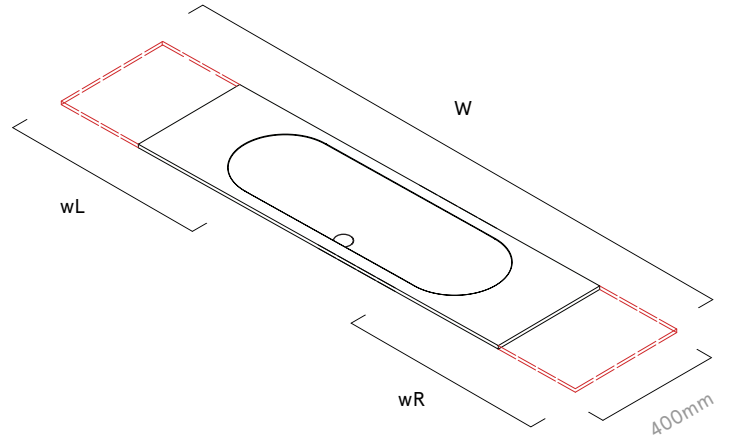
**Bowl Size:**  
1150 W x 340 D

**Overall Dimensions:**  
165 H x 400 D  
W: 1300 - 2600

wL: 675min  
wR: 675min

wL: \_\_\_\_\_ mm

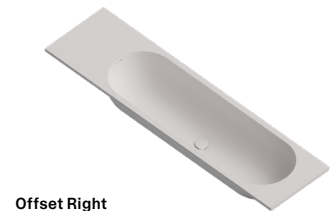
wR: \_\_\_\_\_ mm



Name \_\_\_\_\_

Date \_\_\_\_\_

Sign \_\_\_\_\_



**Solid Surface care:**  
Clean with a soapy sponge, followed by a rinse. For stubborn stains such as lime scale or soap build up use a mild abrasive cleaner like Gumption® paste, Jif® cream or Ajax® cream or powder – use with a soft damp cloth in wide circular motions.

**Resin Coat Care**  
Clean with a neutral, non abrasive cleaner. Scouring agents abrasive cleaning agents such as scouring sponges not suitable for cleaning Resincoat. It is best to clean with warm water and then thoroughly rinsed. Smaller scratches can be polished out with a little skill, in the same way as they can be removed from car paintwork.

Mains Water Co. has detailed, to the best of its ability, the most approximate measurement possible for each product given the method of manufacturing used. Due to varying manufacturing methods, the dimensions illustrated here are nominal and subject to change without notice.

# KUBO: Wall Mounted

**Material:**  
Matt Solid Surface  
**Finish:**  
Uncoated & Resin coat

**Colour:**  
White  
Grey  
Black  
Cream  
Nude  
Red  
Sage  
Brick



## Kubo Wall Basin (Single)

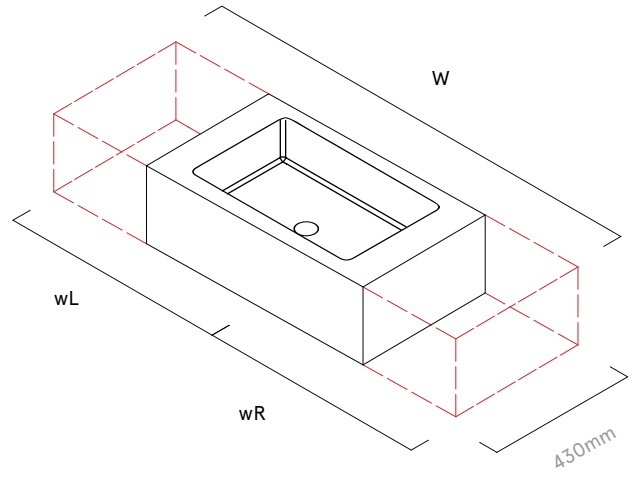
**Bowl Size:**  
500 W x 350 D

**Overall Dimensions:**  
200 H x 430 D  
W: 650 - 2650

wL: 350min  
wR: 350min

wL: \_\_\_\_\_ mm

wR: \_\_\_\_\_ mm



Name \_\_\_\_\_

Date \_\_\_\_\_

Sign \_\_\_\_\_

## Kubo Wall Basin (Double)

**Bowl Size:**  
500 W x 350 D

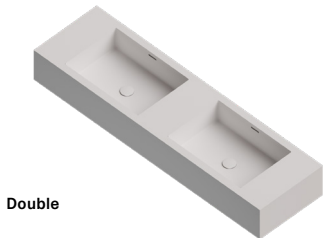
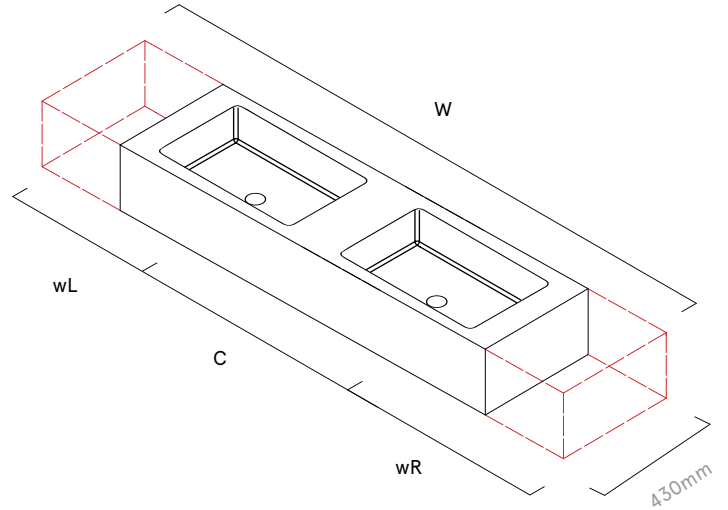
**Overall Dimensions:**  
200 H x 430 D  
W: 1200 - 2650

wL: 350min  
wR: 350min  
C: 700min

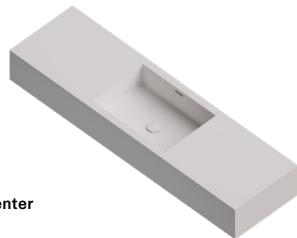
wL: \_\_\_\_\_ mm

wR: \_\_\_\_\_ mm

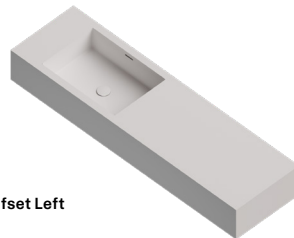
C: \_\_\_\_\_ mm



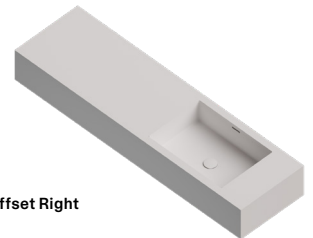
Double



Center



Offset Left



Offset Right

**Solid Surface care:**  
Clean with a soapy sponge, followed by a rinse. For stubborn stains such as lime scale or soap build up use a mild abrasive cleaner like Gumption® paste, Jif® cream or Ajax® cream or powder – use with a soft damp cloth in wide circular motions.

**Resin Coat Care**  
Clean with a neutral, non abrasive cleaner. Scouring agents abrasive cleaning agents such as scouring sponges not suitable for cleaning Resincoat. It is best to clean with warm water and then thoroughly rinsed. Smaller scratches can be polished out with a little skill, in the same way as they can be removed from car paintwork.

Mains Water Co. has detailed, to the best of its ability, the most approximate measurement possible for each product given the method of manufacturing used. Due to varying manufacturing methods, the dimensions illustrated here are nominal and subject to change without notice.

# KUBO: Benchtop

**Material:**  
Matt Solid Surface  
**Finish:**  
Uncoated & Resin coat

**Colour:**  
White  
Grey  
Black  
Cream  
Nude  
Red  
Sage  
Brick



## Kubo Benchtop (Single)

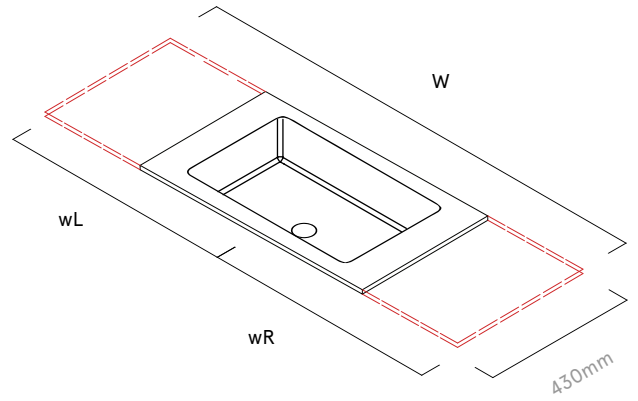
**Bowl Size:**  
500 W x 350 D

**Overall Dimensions:**  
135 H x 430 D  
W: 650 - 2650

wL: 350min  
wR: 350min

wL: \_\_\_\_\_ mm

wR: \_\_\_\_\_ mm



Name \_\_\_\_\_

Date \_\_\_\_\_

Sign \_\_\_\_\_

## Kubo Benchtop (Double)

**Bowl Size:**  
500 W x 350 D

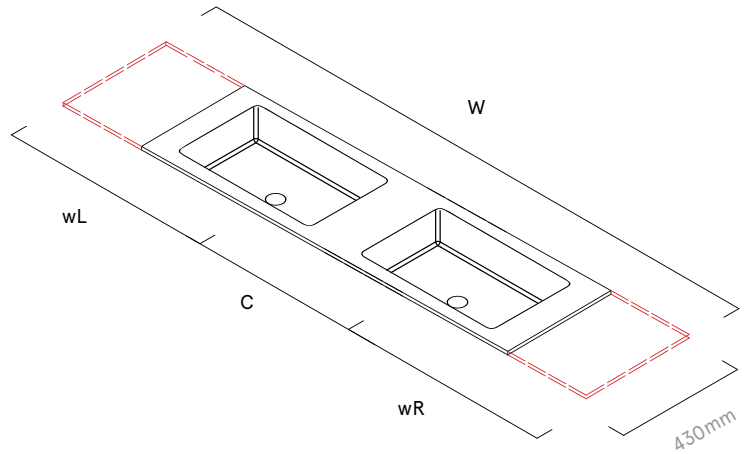
**Overall Dimensions:**  
135 H x 430 D  
W: 1200 - 2650

wL: 350min  
wR: 350min  
C: 700min

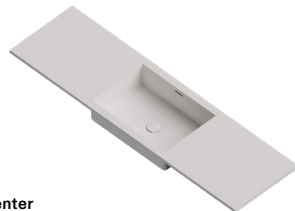
wL: \_\_\_\_\_ mm

wR: \_\_\_\_\_ mm

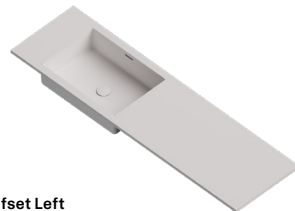
C: \_\_\_\_\_ mm



Double



Center



Offset Left



Offset Right

**Solid Surface care:**  
Clean with a soapy sponge, followed by a rinse. For stubborn stains such as lime scale or soap build up use a mild abrasive cleaner like Gumption® paste, Jif® cream or Ajax® cream or powder – use with a soft damp cloth in wide circular motions.

**Resin Coat Care**  
Clean with a neutral, non abrasive cleaner. Scouring agents abrasive cleaning agents such as scouring sponges not suitable for cleaning Resincoat. It is best to clean with warm water and then thoroughly rinsed. Smaller scratches can be polished out with a little skill, in the same way as they can be removed from car paintwork.

Mains Water Co. has detailed, to the best of its ability, the most approximate measurement possible for each product given the method of manufacturing used. Due to varying manufacturing methods, the dimensions illustrated here are nominal and subject to change without notice.

# LUNAR: Wall Mounted

**Material:**  
Matt Solid Surface  
**Finish:**  
Uncoated & Resin coat

**Colour:**  
White  
Grey  
Black  
Cream  
Nude  
Red  
Sage  
Brick



## Lunar Wall Basin (Single)

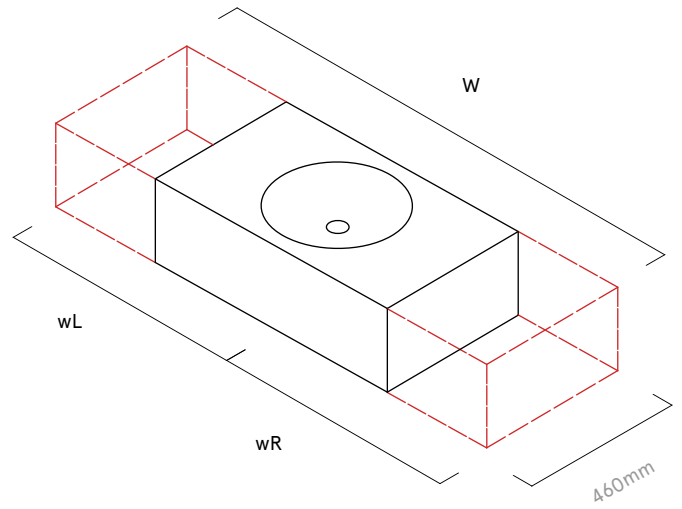
**Bowl Size:**  
355 OD

**Overall Dimensions:**  
200 H x 460 D  
W: 600 - 2600

wL: 278min  
wR: 278min

wL: \_\_\_\_\_ mm

wR: \_\_\_\_\_ mm



Name \_\_\_\_\_

Date \_\_\_\_\_

Sign \_\_\_\_\_

## Lunar Wall Basin (Double)

**Bowl Size:**  
355 OD

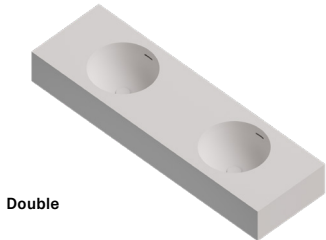
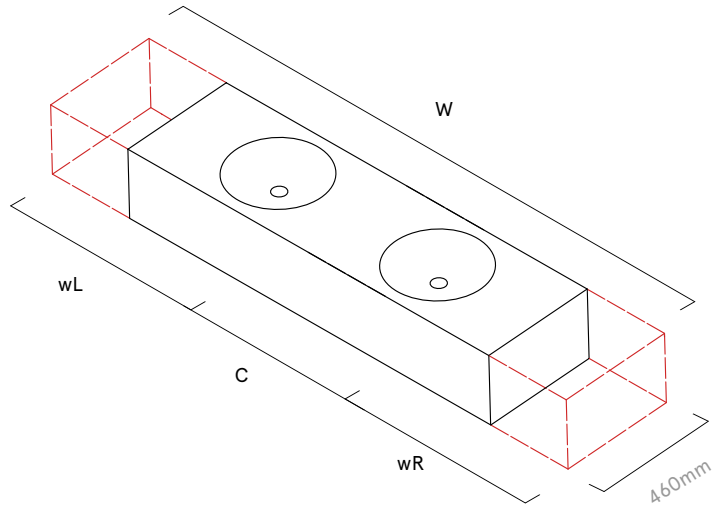
**Overall Dimensions:**  
200 H x 460 D  
W: 1100 - 2600

wL: 278min  
wR: 278min  
C: 555min

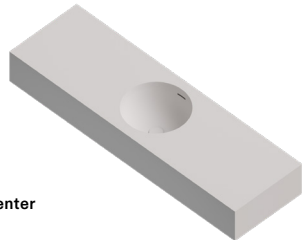
wL: \_\_\_\_\_ mm

wR: \_\_\_\_\_ mm

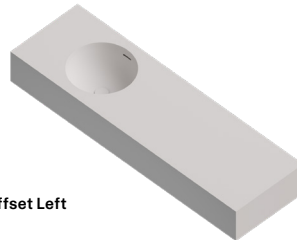
C: \_\_\_\_\_ mm



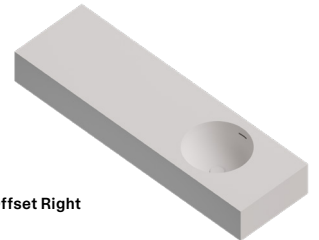
Double



Center



Offset Left



Offset Right

**Solid Surface care:**  
Clean with a soapy sponge, followed by a rinse. For stubborn stains such as lime scale or soap build up use a mild abrasive cleaner like Gumption® paste, Jif® cream or Ajax® cream or powder – use with a soft damp cloth in wide circular motions.

**Resin Coat Care**  
Clean with a neutral, non abrasive cleaner. Scouring agents abrasive cleaning agents such as scouring sponges not suitable for cleaning Resincoat. It is best to clean with warm water and then thoroughly rinsed. Smaller scratches can be polished out with a little skill, in the same way as they can be removed from car paintwork.

Mains Water Co. has detailed, to the best of its ability, the most approximate measurement possible for each product given the method of manufacturing used. Due to varying manufacturing methods, the dimensions illustrated here are nominal and subject to change without notice.



# LUNAR: Benchtop

**Material:**  
Matt Solid Surface  
**Finish:**  
Uncoated & Resin coat

**Colour:**  
White  
Grey  
Black  
Cream  
Nude  
Red  
Sage  
Brick



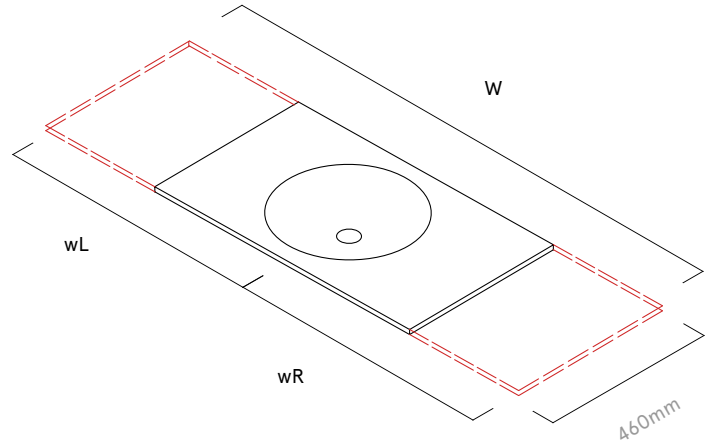
## Lunar Benchtop (Single)

**Bowl Size:**  
355 OD

**Overall Dimensions:**  
140 H x 460 D  
W: 600 - 2600

wL: 278min  
wR: 278min

wL: \_\_\_\_\_ mm



wR: \_\_\_\_\_ mm

Name \_\_\_\_\_

Date \_\_\_\_\_

Sign \_\_\_\_\_

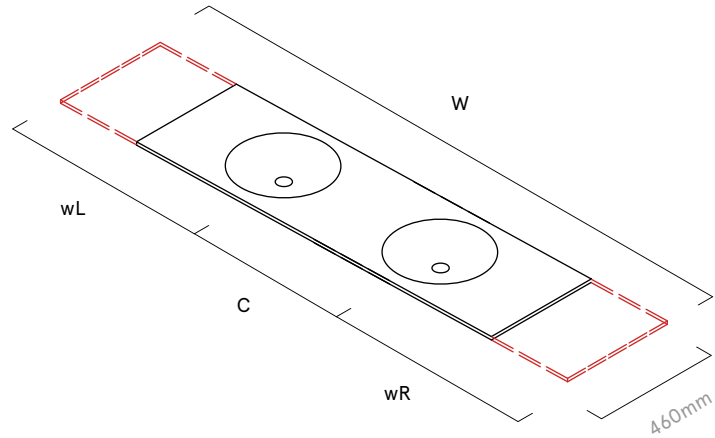
## Lunar Benchtop (Double)

**Bowl Size:**  
355 OD

**Overall Dimensions:**  
140 H x 460 D  
W: 1100 - 2600

wL: 278min  
wR: 278min  
C: 555min

wL: \_\_\_\_\_ mm



wR: \_\_\_\_\_ mm

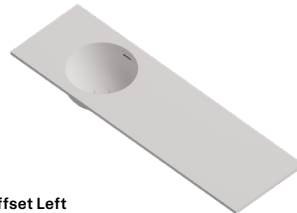
C: \_\_\_\_\_ mm



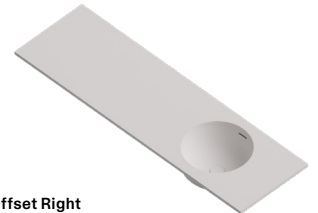
Double



Center



Offset Left



Offset Right

**Solid Surface care:**  
Clean with a soapy sponge, followed by a rinse. For stubborn stains such as lime scale or soap build up use a mild abrasive cleaner like Gumption® paste, Jif® cream or Ajax® cream or powder – use with a soft damp cloth in wide circular motions.

**Resin Coat Care**  
Clean with a neutral, non abrasive cleaner. Scouring agents abrasive cleaning agents such as scouring sponges not suitable for cleaning Resincoat. It is best to clean with warm water and then thoroughly rinsed. Smaller scratches can be polished out with a little skill, in the same way as they can be removed from car paintwork.

Mains Water Co. has detailed, to the best of its ability, the most approximate measurement possible for each product given the method of manufacturing used. Due to varying manufacturing methods, the dimensions illustrated here are nominal and subject to change without notice.

# MAPLE: Wall Mounted

**Material:**  
Matt Solid Surface  
**Finish:**  
Uncoated & Resin coat

**Colour:**  
White  
Grey  
Black  
Cream  
Nude  
Red  
Sage  
Brick



## Maple Wall Basin (Single)

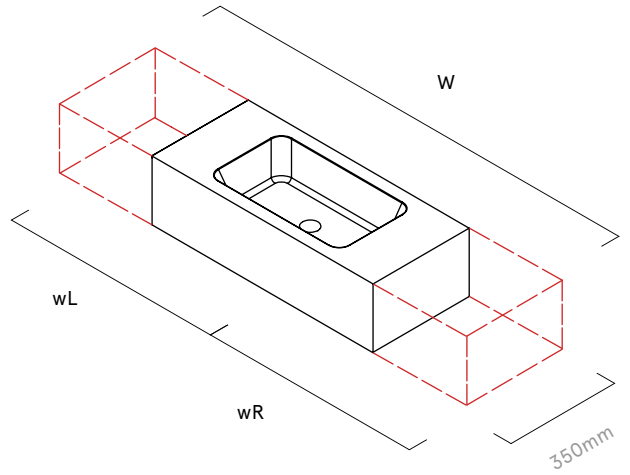
**Bowl Size:**  
480 W x 270 D

**Overall Dimensions:**  
150 H x 350 D  
W: 600 - 2600

wL: 340min  
wR: 340min

wL: \_\_\_\_\_ mm

wR: \_\_\_\_\_ mm



Name \_\_\_\_\_

Date \_\_\_\_\_

Sign \_\_\_\_\_

## Maple Wall Basin (Double)

**Bowl Size:**  
480 W x 270 D

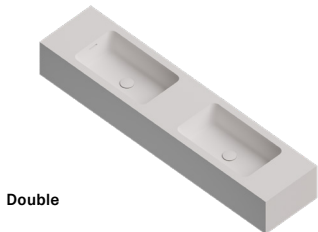
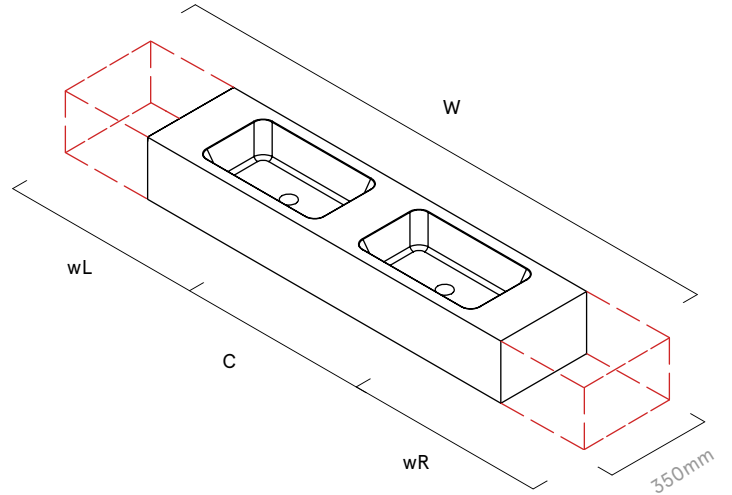
**Overall Dimensions:**  
150 H x 350 D  
W: 1100 - 2600

wL: 340min  
wR: 340min  
C: 680min

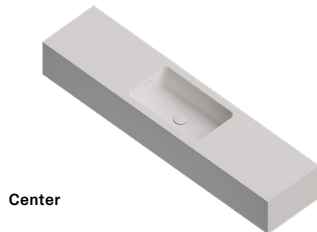
wL: \_\_\_\_\_ mm

wR: \_\_\_\_\_ mm

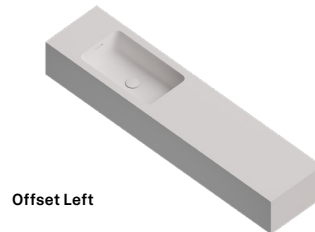
C: \_\_\_\_\_ mm



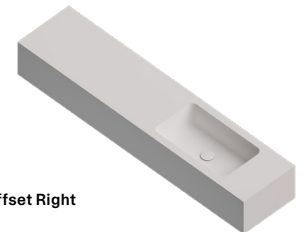
Double



Center



Offset Left



Offset Right

**Solid Surface care:**  
Clean with a soapy sponge, followed by a rinse. For stubborn stains such as lime scale or soap build up use a mild abrasive cleaner like Gumption® paste, Jif® cream or Ajax® cream or powder – use with a soft damp cloth in wide circular motions.

**Resin Coat Care**  
Clean with a neutral, non abrasive cleaner. Scouring agents abrasive cleaning agents such as scouring sponges not suitable for cleaning Resincoat. It is best to clean with warm water and then thoroughly rinsed. Smaller scratches can be polished out with a little skill, in the same way as they can be removed from car paintwork.

Mains Water Co. has detailed, to the best of its ability, the most approximate measurement possible for each product given the method of manufacturing used. Due to varying manufacturing methods, the dimensions illustrated here are nominal and subject to change without notice.

# MAPLE: Benchtop

**Material:**  
Matt Solid Surface  
**Finish:**  
Uncoated & Resin coat

**Colour:**  
White  
Grey  
Black  
Cream  
Nude  
Red  
Sage  
Brick



## Maple Benchtop (Single)

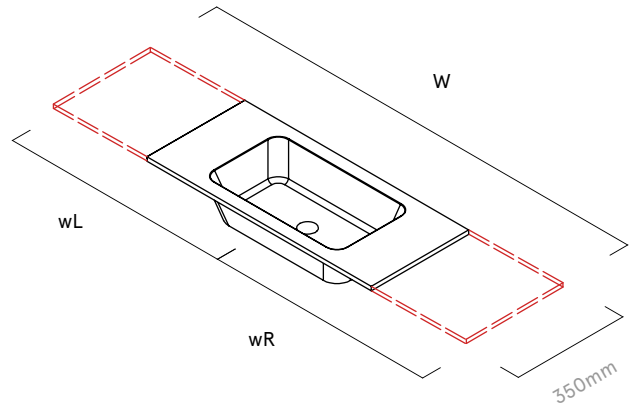
**Bowl Size:**  
480 W x 270 D

**Overall Dimensions:**  
100 H x 350 D  
W: 600 - 2600

wL: 340min  
wR: 340min

wL: \_\_\_\_\_ mm

wR: \_\_\_\_\_ mm



Name \_\_\_\_\_

Date \_\_\_\_\_

Sign \_\_\_\_\_

## Maple Benchtop (Double)

**Bowl Size:**  
480 W x 270 D

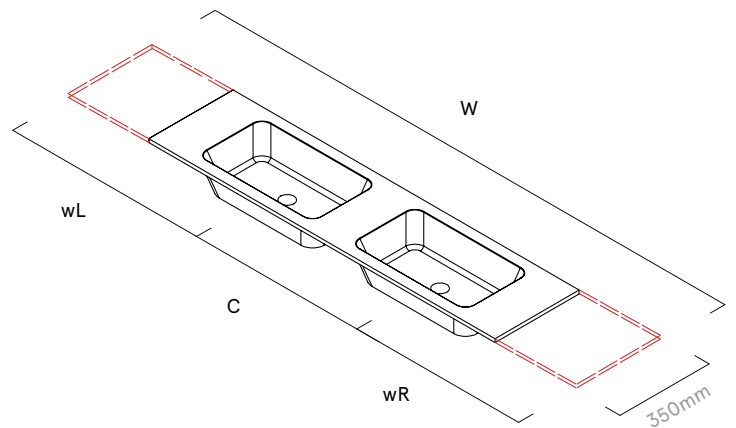
**Overall Dimensions:**  
100 H x 350 D  
W: 1100 - 2600

wL: 340min  
wR: 340min  
C: 680min

wL: \_\_\_\_\_ mm

wR: \_\_\_\_\_ mm

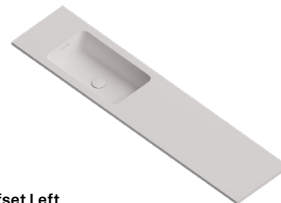
C: \_\_\_\_\_ mm



Double



Center



Offset Left



Offset Right

**Solid Surface care:**  
Clean with a soapy sponge, followed by a rinse. For stubborn stains such as lime scale or soap build up use a mild abrasive cleaner like Gumption® paste, Jif® cream or Ajax® cream or powder – use with a soft damp cloth in wide circular motions.

**Resin Coat Care**  
Clean with a neutral, non abrasive cleaner. Scouring agents abrasive cleaning agents such as scouring sponges not suitable for cleaning Resincoat. It is best to clean with warm water and then thoroughly rinsed. Smaller scratches can be polished out with a little skill, in the same way as they can be removed from car paintwork.

Mains Water Co. has detailed, to the best of its ability, the most approximate measurement possible for each product given the method of manufacturing used. Due to varying manufacturing methods, the dimensions illustrated here are nominal and subject to change without notice.